

Candidate Number										Candidate Name									

# JUNIOR SECONDARY CERTIFICATE

**NEEDLEWORK AND CLOTHING**

**1401/1**

PAPER 1

2 hour 15 minutes

Marks 130

**2018**

No Additional Materials.

## INSTRUCTIONS AND INFORMATION TO CANDIDATES

- Candidates answer on the Question Paper in the spaces provided.
- Write your Candidate Number and Name in the spaces at the top of this page.
- Write in dark blue or black pen.
- Do not use correction fluid.
- You may use a soft pencil for any rough work, diagrams or graphs.
- Answer **all** questions.
- The number of marks is given in brackets [ ] at the end of each question or part question.

For Examiner's Use	
<b>Section A</b>	
<b>Section B</b>	
<b>Total</b>	

<i>Marker</i>	
<i>Checker</i>	

This document consists of **16** printed pages.



**Republic of Namibia**  
**MINISTRY OF EDUCATION, ARTS AND CULTURE**

## SECTION A

For Examiner's  
Use

1 Study the front and back of the pattern envelope (pages 3 and 4) and answer the questions that follow. All measurements must be given in metric units (mm, cm or m).

(a) Using the information provided, give the following:

(i) The pattern's trade name.

..... [2]

(ii) The pattern trade number.

..... [2]

(iii) The pattern sizes.

..... [2]

(b) List **four** types of garments illustrated in the pattern.

1.....

2.....

3.....

4..... [4]

(c) Determine the pattern size for a lady who's figure measurements are:

Bust = 94 cm, Waist = 71 cm, Hip = 97 cm

.....

..... [2]

(d) How much fabric is needed to make jacket **A**, size 16, using a fabric width 115 cm?

..... [2]

(e) How much interfacing is required for jacket **A**, size 20, using a fabric width 51 cm?

..... [2]

(f) List **three** types of fabric suitable for these garments.

1.....

2.....

3..... [3]

Pattern envelope front

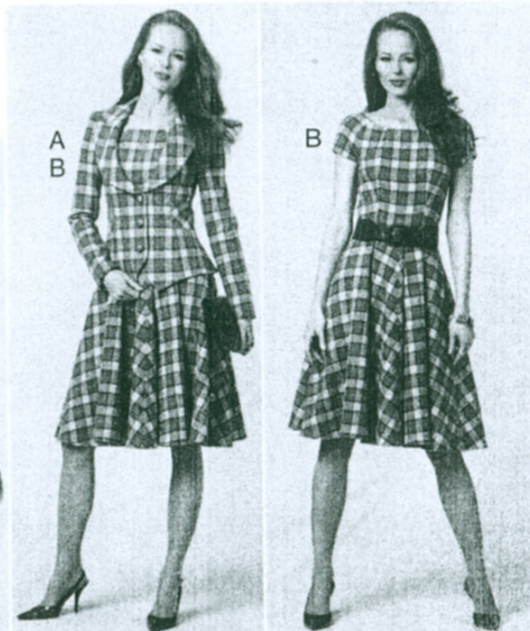
VOGUE PATTERNS

V8701

SIZES/TAILLES	6	8	10	12	14	16	18	20
Bust	30½	31½	32½	34	36	38	40	42
Waist	23	24	25	26½	28	30	32	34
Hip	32½	33½	34½	36	38	40	42	44
Poitrine	77	80	83	87	92	97	102	107
Taille	58	61	64	67	71	76	81	87
Hanches	83	85	88	92	97	102	107	112



VOGUE®  
 PATTERNS  
 WARDROBE



Pattern envelope back

U.S. \$27.50 CAN. \$33.00 GREEN V

V8701

AVERAGE/MOINS FACILE

**MISSES' JACKET, DRESS, SKIRT AND PANTS:** Close-fitting, hip length, lined jacket A has shoulder princess seams, bias lower side front and back, self-faced lapels, notch collar, self-faced peplum with back inverted pleat and long sleeves with elbow dart. Close-fitting, flared, mid-knee length, lined dress B has front and back darts, front scooped neckline, back V-neckline, short raglan sleeves, back zipper and stitched hem. Straight, mid-knee length skirt C has front and back seams, back zipper and narrow waistband. Straight-legged pants D have front and back darts, back zipper and narrow waistband.

**NOTIONS:** Jacket A: 1/2" Shoulder Pads or Vogue #9723, One 1/4" Snap and Three 1" Buttons. Dress B: 16" Zipper, Hooks and Eyes. Skirt C, Pants D: 7" Zipper, One Hook and Eye Closure.

**FABRICS:** Jacket A, Dress B, Skirt C, Pants D: Tropical Wool, Lightweight Double Knit, Lightweight Crepe and Shantung. Unsuitable for obvious diagonals. Allow extra fabric to match plaids or stripes. Use nap yardages/layouts for pile, shaded or one-way design fabrics. \*with nap. \*\*without nap.

**Combinations:** AA(6-8-10-12), EE(14-16-18-20)

SIZES	6	8	10	12	14	16	18	20
<b>JACKET A</b>								
45**/**	2 1/2	2 1/2	2 1/2	2 1/2	2 3/4	2 3/4	3	3
60**/**	2 1/2	2 1/2	2 1/2	2 1/2	2 1/2	2 1/2	2 1/2	2 1/4
<b>FUSIBLE INTERFACING A</b>								
18", 20"	1 1/2	1 1/2	1 3/4	1 3/4	1 3/4	1 3/4	1 3/4	1 1/2
<b>LINING A - 45", 1 1/2 yds.</b>								
<b>DRESS B</b>								
45**/**	3 1/4	3 1/4	3 1/4	3 1/4	3 3/8	3 3/8	3 3/8	3 1/2
60**/**	2 1/4	2 1/4	2 1/4	2 1/4	2 1/4	2 3/8	2 1/2	2 1/2
<b>LINING B</b>								
45"	2 1/2	2 1/2	3	3	3 1/2	3 1/4	3 3/8	3 3/8
<b>SKIRT C</b>								
45**/**	1 1/2	1 1/2	1 1/2	1 1/2	1 1/2	1 1/2	1 1/2	1 1/2
60**/**	7/8	7/8	7/8	7/8	1	1	1 1/2	1 1/2
<b>PANTS D</b>								
45**/**	2 1/4	2 3/8	2 1/2	2 1/2	2 1/2	2 1/2	2 1/2	2 1/2
60**/**	1 3/8	1 1/2	1 1/2	1 3/4	2 1/4	2 1/4	2 1/4	2 1/2
<b>FUSIBLE INTERFACING C, D</b>								
18", 20"	7/8	7/8	7/8	7/8	1	1	1 1/2	1 1/2
<b>Width, lower edge</b>								
Jacket A (Approximate)								
	37	38	39	40 1/2	42 1/2	44 1/2	46 1/2	48 1/2
Skirt C	36	37	38	39 1/2	41 1/2	43 1/2	45 1/2	47 1/2
<b>Width, each leg</b>								
Pants D	17	17 1/2	18	18 1/2	19	19 1/2	20	20 1/2
<b>Back length from base of your neck</b>								
Jacket A	21	21 1/4	21 1/2	21 3/4	22	22 1/4	22 1/2	22 3/4
Dress B	38 1/2	38 3/4	39	39 1/4	39 1/2	39 3/4	40	40 1/4
<b>Back length from waist</b>								
Skirt C, 23"								
<b>Side length from waist</b>								
Pants D, 42"								

**VESTE, ROBE, JUPE ET PANTALON (J. femme):** Veste A avec ajustée, longueur aux hanches, doublée, coutures princesse à l'épaule, côté devant et dos inférieurs en biais, revers entoilés du même tissu, col cranté, basque entoilée du même tissu, pli creux au dos, manches longues, pince au coude. Robe B avec ajustée, évasée, au genou, doublée, pinces au devant et dos, encolure profonde au devant, encolure en "V" au dos, manches raglan courtes, fermeture à glissière au dos, ourlet piqué. Jupe C avec droite, au genou, coutures au devant et dos, fermeture à glissière au dos, ceinture étroite. Pantalon D avec jambes droites, pinces au devant et dos, fermeture à glissière au dos, ceinture étroite.

**MERCERIE:** Veste A: Epaulettes (1.3cm) ou Vogue #9723, 1 Bouton-pression (6mm) et 3 Boutons (25mm). Robe B: Fermeture à Glissière (40cm), Agrafes. Jupe C, Pantalon D: Fermeture à Glissière (18cm), 1 Fermeture à Agrafe.

**TISSUS:** Veste A, Robe B, Jupe C, Pantalon D: Laine tropicale, Jersey double fin, Crêpe fin et Shantung. Rayures/grandes diagonales/écossais ne conviennent pas. Compte non tenu des raccords de rayures/carreaux. \*avec sens. \*\*sans sens.

**Séries:** AA(6-8-10-12), EE(14-16-18-20)

TAILLES	6	8	10	12	14	16	18	20
<b>VESTE A</b>								
115cm**/**	2.4	2.4	2.4	2.4	2.6	2.6	2.8	2.8
150cm**/**	2.0	2.0	2.0	2.0	2.0	2.0	2.0	2.1
<b>ENTOILAGE THERMOCOLLANT A</b>								
46, 51cm	1.5	1.5	1.6	1.6	1.6	1.6	1.6	1.8
<b>DOUBLURE A - 115cm, 1.3m</b>								
<b>ROBE B</b>								
115cm**/**	3.0	3.0	3.0	3.0	3.1	3.1	3.1	3.2
150cm**/**	2.1	2.1	2.1	2.1	2.1	2.2	2.3	2.3
<b>DOUBLURE B</b>								
115cm	2.7	2.7	2.8	2.8	2.9	3.0	3.1	3.1
<b>JUPE C</b>								
115cm**/**	1.4	1.4	1.4	1.4	1.4	1.4	1.4	1.4
150cm**/**	0.8	0.8	0.8	0.8	1.0	1.0	1.4	1.4
<b>PANTALON D</b>								
115cm**/**	2.1	2.2	2.3	2.3	2.3	2.3	2.3	2.3
150cm**/**	1.3	1.3	1.4	1.6	2.1	2.1	2.1	2.3
<b>ENTOILAGE THERMOCOLLANT C, D</b>								
46, 51cm	0.8	0.8	0.8	0.8	1.0	1.0	1.1	1.1
<b>Largeur, à l'ourlet</b>								
Veste A (Environ)								
	94	97	99	103	108	113	118	123
Jupe C	92	94	97	100	105	110	116	121
<b>Largeur, chaque jambe</b>								
Pantalon D	43	45	46	47	48	50	51	52
<b>Longueur - dos, votre nuque à l'ourlet</b>								
Veste A	54	54	55	55	56	57	57	58
Robe B	98	99	99	100	100	101	102	102
<b>Longueur - dos, taille à ourlet</b>								
Jupe C, 59cm								
<b>Longueur - coté, taille à ourlet</b>								
Pantalon D, 107cm								

VOGUE PATTERN, 120 BROADWAY, NEW YORK 10271 © 2010 The McCall Pattern Co. • www.voguepatterns.com  
 • PRINTED IN U.S.A. ALL RIGHTS RESERVED. SOLD FOR INDIVIDUAL HOME USE ONLY AND NOT FOR COMMERCIAL OR MANUFACTURING PURPOSES./RESERVE À UN USAGE PERSONNEL.



**(g)** Using at least **two** words in each case, describe the features of the following garments.

**(i)** Jacket

.....  
.....

[2]

**(ii)** Dress

.....  
.....

[2]

**(iii)** Skirt

.....  
.....

[2]

**(iv)** Pants

.....  
.....

[2]

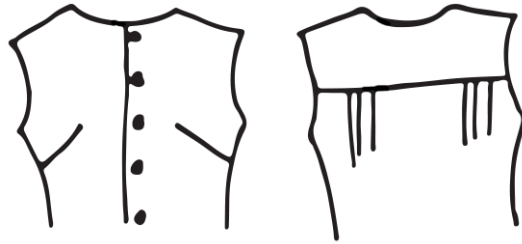
**(h)** Provide the missing information for notions needed for a jacket.

Requirements	Quantity	Size
Shoulder pads/Jacket	One pair	<b>(i)</b> .....
Buttons/Jacket	<b>(ii)</b> .....	<b>(iii)</b> .....

[3]

[30]

2 (a) Study the following views of a blouse and list the pattern pieces needed to construct the blouse.



.....

.....

.....

.....

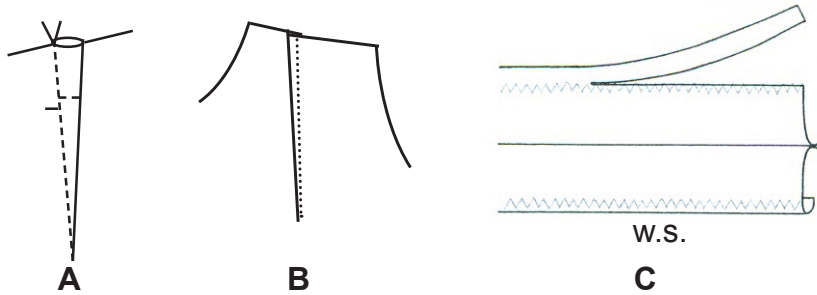
.....

.....

[3]

(b) Study the process illustrated below for each question. Choose the correct answer and circle it.

(i) The seam edged finish used for seams.



[1]

(ii) Stay stitching



[1]

(c) Illustrate each of the following pattern markings:

*For Examiner's  
Use*

(i) Place on fold

..... [1]

(ii) Adjustment line

..... [1]

(iii) Stitching direction

..... [1]

(iv) Dots

..... [1]

(v) Straight grain

..... [1]

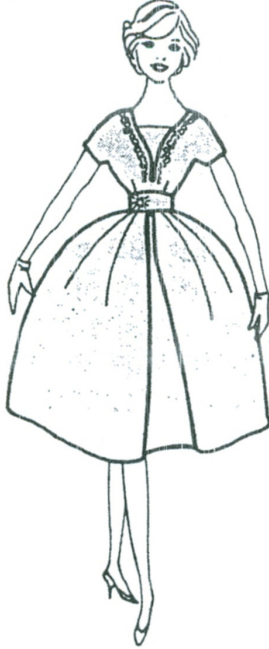
**[10]**

## SECTION B

For Examiner's  
Use

- 3 Read the following case study and answer the questions that follow.

Helena Jonas decided to go shopping for her matric farewell dress. She preferred to go for a home-made dress. She already had a pattern and decided on a polyester fabric with a one way design.



- (a) Define the term *one way design fabric*.

.....

.....

.....

.....

[2]

- (b) List **four** advantages Helena have for opting for a home-made garment.

1.....

.....

2.....

.....

3.....

.....

4.....

.....

[4]



(c) List **three** disadvantages of home-made garments.

1 .....

.....

2 .....

.....

3 .....

.....

[3]

(d) Describe how Helena could straighten the fabric which is off-grain.

.....

.....

.....

.....

.....

.....

.....

.....

.....

.....

.....

[5]

(e) List **four** properties of polyester fabrics.

1 .....

2 .....

3 .....

4 .....

[4]

(f) Helena is tall with a slim figure, list **two** style features that she should avoid.

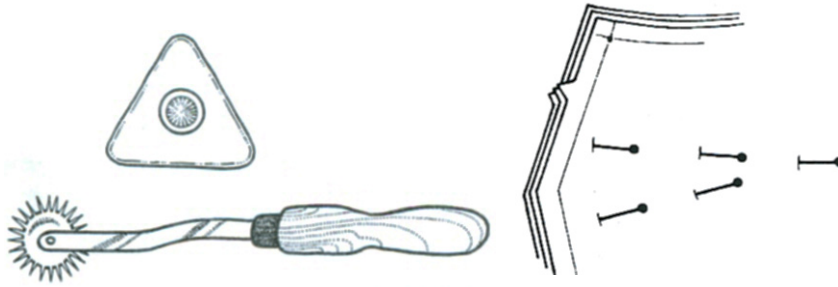
1 .....

2 .....

[2]

[20]

4 (a) Study the following equipment used for transferring pattern markings.



(i) Identify the equipment that can be used for transferring pattern markings.

.....  
 .....  
 .....

[3]

(ii) Which method is used to transfer pattern markings onto dark fabrics?

.....

[1]

(iii) Describe the method of transferring pattern markings using tailor's tacking.

.....  
 .....  
 .....  
 .....  
 .....

[5]

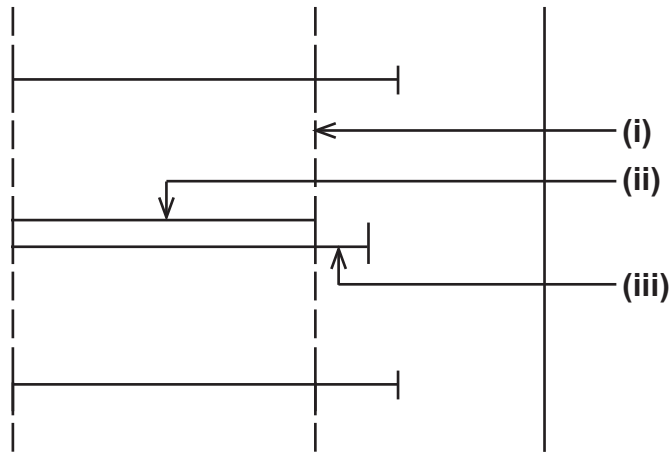
(iv) Why is diamond notches used on pattern pieces?

.....

[1]

[10]

5 The sketch illustrates the measuring of the position of buttonholes.



(a) Label the information (i) – (iii).

(i).....

(ii).....

(iii)..... [3]

(b) List **two** places where buttonholes can be found on garments.

1.....

2..... [2]

(c) Why are buttonholes sewn on double fabric?

.....

..... [2]

(d) Explain how to determine the correct buttonhole size.

.....

.....

.....

.....

.....

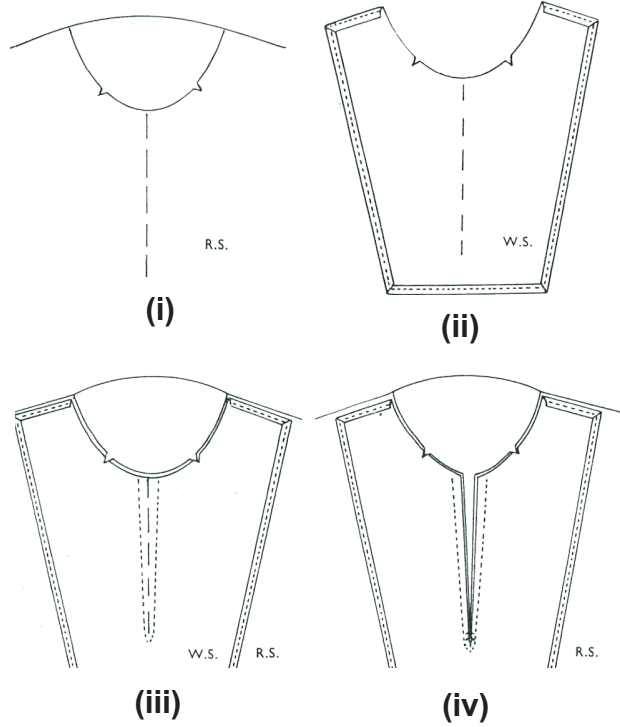
.....

.....

..... [3]

[10]

6 The diagram below shows the construction of a faced opening, study the diagram and answer the questions that follow.



(a) With the help of the diagram describe how to construct a faced opening.

.....

.....

.....

.....

.....

.....

.....

.....

.....

.....

.....

.....

.....

.....

.....

.....

.....

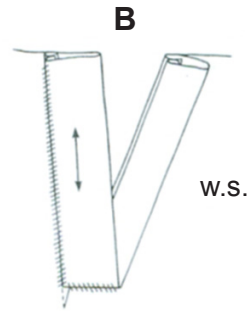
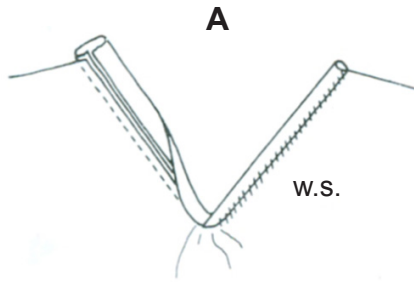
.....

.....

.....

.....

(b) Identify the **two** types of openings below.



A .....

B .....

[2]

(c) Hems are used to neaten the lower edges of garments.

List **three** qualities of a good hem.

1 .....

.....

2 .....

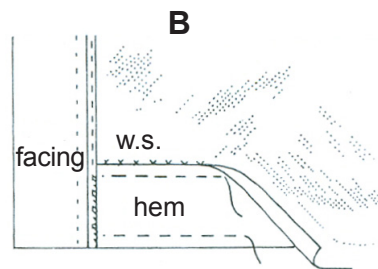
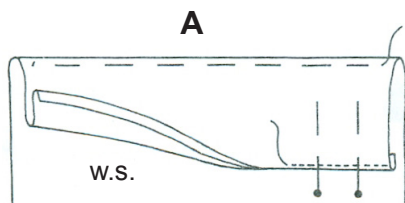
.....

3 .....

.....

[3]

(d) Identify the **two** types of hems below.



A .....

B .....

[2]

(e) What is the width of a plain hem?

.....

[1]

(f) Name **two** hand stitches that can be used to sew hems.

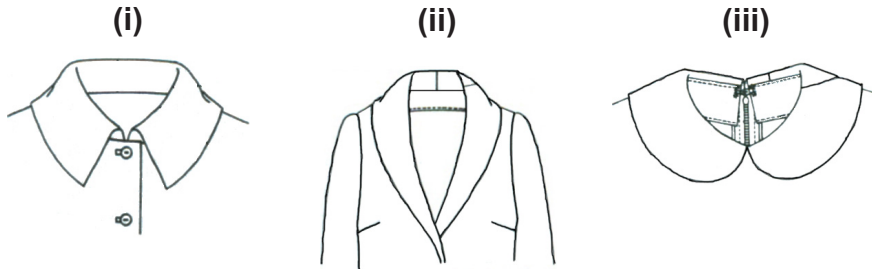
1 .....

2 .....

[2]

[20]

7 (a) Identify the types of collars shown.



(i) .....

(ii) .....

(iii) .....

[3]

(b) Arrange the processes in the correct sequence when making a shirt collar. Write out the full sentence in the sequence.

Press the garment; Snip the curved seams; Complete the collar; Match the end of the collar to the C.F. line; Trim and grade seam allowances; Match the notches, seams and centre back lines; Place the neckline of the collar and garment together; Pin and tack; Machine round; Bar tack the facing on the shoulder seams

(i) .....

(ii) .....

(iii) .....

(iv) .....

(v) .....

(vi) .....

(vii) .....

(viii) .....

(ix) .....

(x) .....

[7]

(c) Explain how to transfer a design for a patchwork/quilting article using running stitches.

.....  
.....  
.....  
.....  
.....  
.....  
.....  
.....  
.....  
.....  
.....  
.....  
.....  
.....  
.....

[5]

(d) List **ten** general rules for pressing the patching work or a quilted article.

1.....  
2.....  
3.....  
4.....  
5.....  
6.....  
7.....  
8.....  
9.....  
10.....

[10]

(e) Describe the care of the overlocker machine.

*For Examiner's Use*

.....

.....

.....

.....

.....

.....

.....

.....

.....

.....

.....

.....

.....

.....

.....

.....

[5]

[30]