

Centre Number	Candidate Number	Candidate Name
---------------	------------------	----------------

**NAMIBIA SENIOR SECONDARY CERTIFICATE**

**FASHION AND FABRICS ORDINARY LEVEL**

**4342/1**

PAPER 1

2 hours

Marks 80

**2020**

Additional Material: Answer Book

**INSTRUCTIONS AND INFORMATION TO CANDIDATES**

- Write your Centre Number, Candidate Number and Name in the spaces at the top of this page and in the Answer Book provided.
- Write in dark blue or black pen.
- You may use a soft pencil for any diagrams or rough working.
- Do not use correction fluid.
- Do not write in the margin *For Examiner's Use*.

**Section A**

- Write your answers in the spaces on the Question Paper.
- Answer **all** questions from Section A.

**Section B**

- Write your answers in the Answer Book provided.
- Answer **three** questions.
- Answer each question on a separate page.
- At the end of the examination fasten all your work securely together.
- The number of marks is given in brackets [ ] at the end of each question or part question.

For Examiner's Use	
Section A	
Section B	
Question	
Question	
Question	
<b>Total</b>	

Marker	
Checker	

This document consists of **5** printed pages and **3** blank pages and an **Insert**.



Republic of Namibia

**MINISTRY OF EDUCATION, ARTS AND CULTURE**

SECTION A

Answer **all** questions.

1 Refer to the insert.

The insert shows the front and back of a pattern envelope. Study the illustrations and pattern information carefully.

(a) Complete the following description of the garments illustrated.

The fitted blouse has (i) ..... seams and the sleeves have (ii) ..... lap. The sleeves have (iii) ..... cuffs. View D has a hem that shows on the (iv) ..... side.

View A, B, C, D has a collar with a collar (v) .....

The collar for E, F is cut on the (vi) ..... and extends into (vii) ..... ends. [7]

(b) State the amount of fabric 115 cm wide, needed to make View B size 12.

..... [1]

(c) Name **two** notions needed to complete the view A.

1 .....

2 ..... [2]

(d) List any **two** fabrics excluding challis, which are recommended on the back of the pattern envelope as suitable for the garments.

1 .....

2 ..... [2]

(e) One of the suggested fabrics is Challis. Describe the fabric.

Fibre Origin ..... [1]

Structure ..... [1]

Appearance ..... [1]

Weight ..... [1]

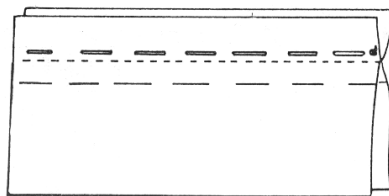
(f) State **two** types of disposal of fullness which have been used on the blouse, View A.

1 .....

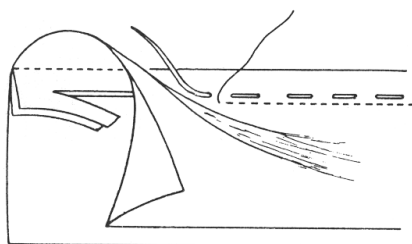
2 ..... [2]

(g) Study the diagrams below which show the process of a French seam.

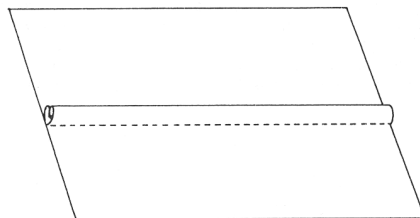
Complete the following sentences to show your understanding of the process.



**Fig 1**



**Fig 2**



**Fig 3**

- (i) Place two pieces together with the ..... sides facing and the edges level.
- (ii) Tack ..... mm above the fitting line.
- (iii) Stitch ..... the tacking.
- (iv) Remove the tacking and trim the raw edges so that the seam is ..... mm wide.
- (v) Press the turnings open and turn the garment to the ..... side.
- (vi) Flatten the seam along the line of stitching. Pin and tack on the ..... line.
- (vii) Stitch below the ..... on the wrong side.
- (viii) Remove the tacking and press the seam flat to the ..... side.

[8]

[26]

## SECTION B

Answer **three** questions in the Answer Book.

- 2 (a) List **three** characteristics of woven fabric and give **three** examples. [6]  
 (b) Describe the **six** stages in the processing of raw cotton fibres from the picked cotton boll to the finished yarn. [12]

[18]

- 3 (a) You wish to purchase bed sheets. One sheet is made from cotton and the other from polyester cotton blend.

Explain why the polyester cotton blend sheet would be a better buy. [8]

- (b) Describe **four** types of fabric finishes as they relate to improving fabrics for clothing. [8]

- (c) State **two** reasons why linen is not used as frequently as cotton. [2]

[18]

- 4 (a) Describe the properties of knitted fabrics according to their:

(i) comfort [3]

(ii) durability [3]

- (b) Explain how to launder a woollen jersey. [7]

- (c) Draw a front view of a trouser with the following features:

pleats, zipper, pockets and waistbands.

Label each of these features. [5]

[18]

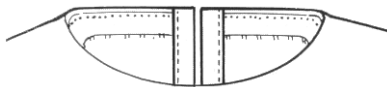
- 5 (a) Explain how a puff-sleeve would be inserted into the armhole after the gathers have been worked. [7]

- (b) Hems are used to neaten the lower edges of garments.

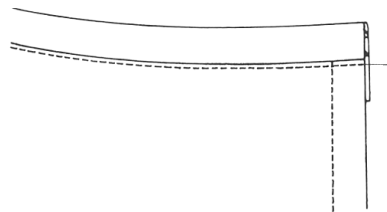
List **five** qualities of a good hem. [5]

- (c) Study the following diagrams.

(i)



(ii)



Identify the kinds of edge finishes, (i) and (ii). [2]

- (d) State the difference between edge finish (i) and (ii). [4]

[18]

- 6 (a)** Write about the usefulness of each of the following items.
- (i)** seam ripper [2]
  - (ii)** tailor's chalk [2]
  - (iii)** seam roll [2]
- (b)** List **four** points for the correct use of a steam iron. [4]
- (c)** Describe how to care for an electrical sewing machine. [8]

**[18]**

**BLANK PAGE**

**BLANK PAGE**

**BLANK PAGE**