

Candidate Number <input type="text"/> <input type="text"/> <input type="text"/> <input type="text"/> <input type="text"/> <input type="text"/> <input type="text"/> <input type="text"/> <input type="text"/> <input type="text"/>	Candidate Name
--	----------------

JUNIOR SECONDARY CERTIFICATE

GEOGRAPHY

1300/1

PAPER 1

2 hours

Marks 90

2019

Additional Materials: Ruler

INSTRUCTIONS AND INFORMATION TO CANDIDATES

- Write your Candidate Number and Candidate Name in the spaces at the top of this page.
- Write your answers on the Question paper in the spaces provided.
- Write in dark blue or black pen.
- Use a pencil for any diagrams or graphs.
- Do not use correction fluid.
- Answer **all** questions.
- All working must be clearly shown.
- Sketch maps and diagrams should be drawn whenever they serve to illustrate an answer.
- The number of marks is given in brackets [] at the end of each question or part question.

For Examiner's Use		
1		
2		
3		
4		
5		
6		
7		
Total		

<i>Marker</i>		
<i>Checker</i>		

This document consists of **16** printed pages.



Republic of Namibia
MINISTRY OF EDUCATION, ARTS AND CULTURE

Climatology

- 1 (a) Study Fig. 1A and Fig. 1B. Fig. 1A shows instruments used at a weather station and Fig. 1B shows the wooden box in which some of these instruments are kept.

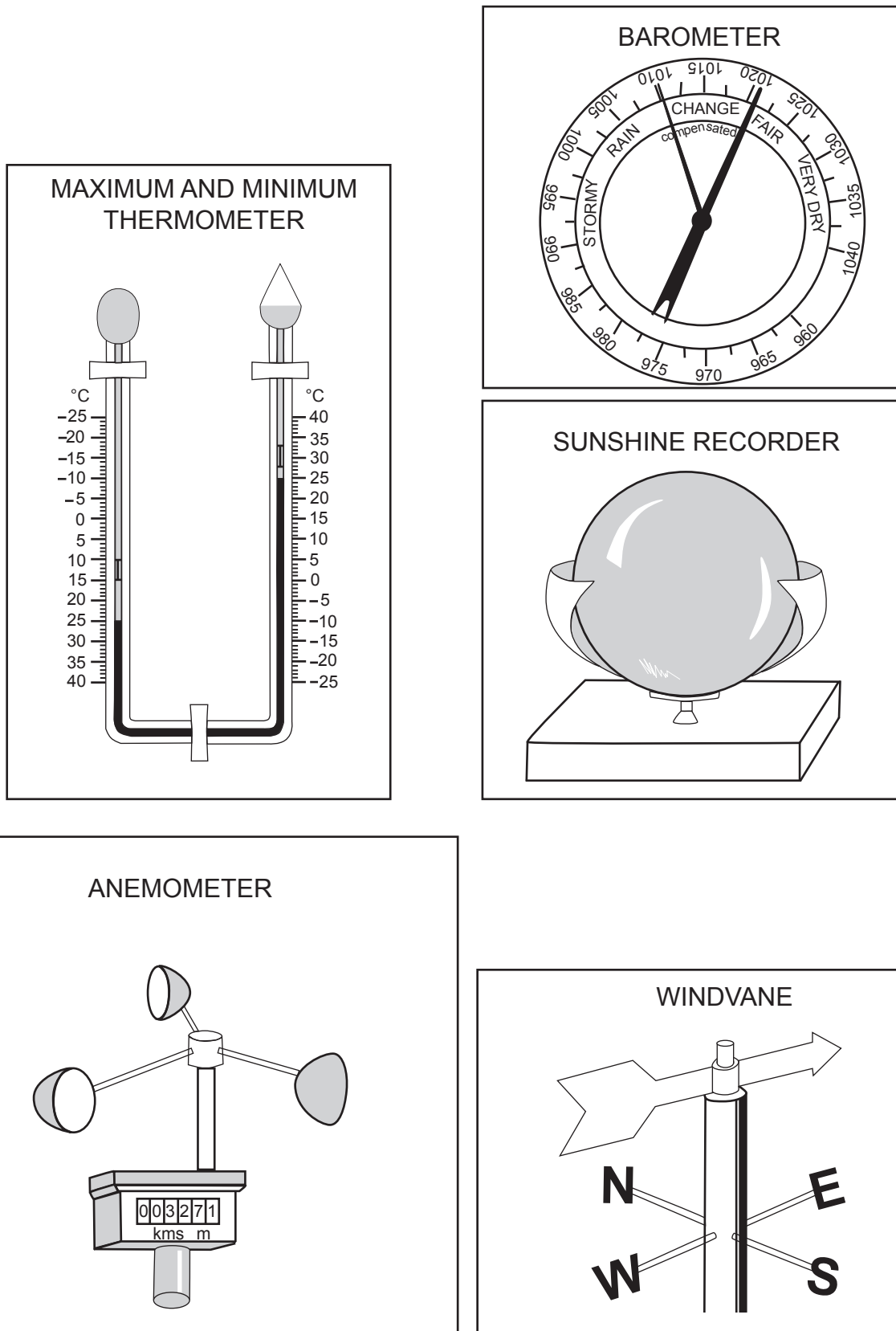


Fig. 1A

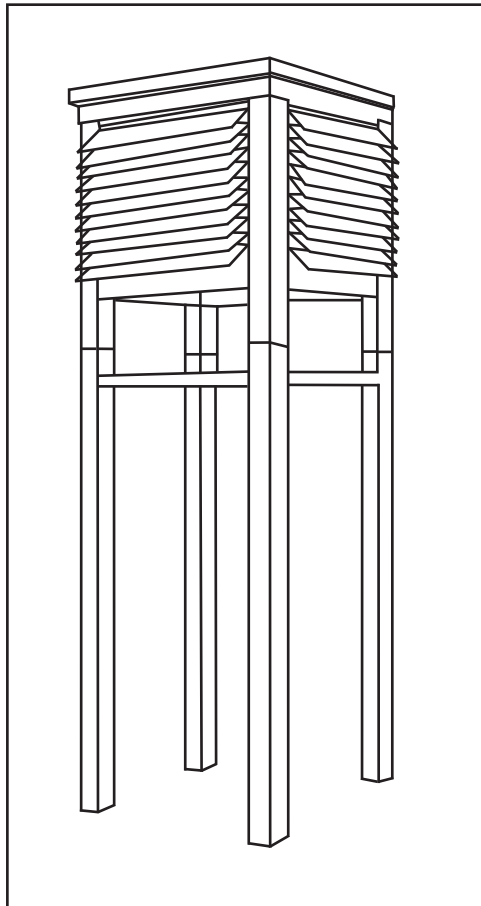


Fig. 1B

- (i) What is the wooden box shown in Fig. 1B called?

..... [1]

- (ii) Identify the **two** instruments shown in Fig. 1A, which are kept in the wooden box.

1

2

- (iii) Explain why the wooden box

A is painted white.

.....

B has slatted sides.

.....

C has legs which raise it above the ground.

..... [3]

- (iv) Describe where the wooden box should be sited.

.....

..... [2]

(v) Give **two** reasons for your answer in (a) (iv).

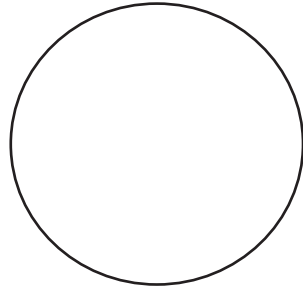
1

2

[2]

(b) Draw a weather station model using the following data.

- Atmospheric temperature = 35°C
- Cloud cover = 5/8
- Wind speed = 15 knots
- Wind direction = SSW
- Weather = drizzle



[5]

[15]

Ecology

- 2 (a) Study the article about the pollution of Versova Beach in Mumbai, India, a developing country.

VERSOVA BEACH RAISES A STINK

1 kilometre stretch of beach turns into a dump yard with sewer lines opening onto it.

A one kilometre stretch of the Versova Beach is now covered in rubbish because of dumping of garbage and debris, and encroachment by the fishermen’s community. Also drainage and sewer pipes from houses open on to this stretch of beach. “This beach, which was once beautiful, has become a garbage beach. Piles of garbage and waste are thrown here. You can smell the beach from kilometres away,” complained Gautam Popat, who lives near the beach.

The Versova Beach, an extension of the Juhu Beach that is busy with people, has been the choice of those who prefer some calm. But the pollution is driving the crowds away.

“Plastic bags, rotten food and even construction debris are thrown here,” said resident Deepak Sahani.

The Brihanmumbai Municipal Corporation (BMC) has announced plans to clean up the beach.

An official confessed that the clean up operation was unlikely to be successful due to opposition from local fishermen.

- (i) What is meant by *pollution*?

..... [1]

- (ii) Using the article, describe **two** different ways in which Versova Beach is polluted.

1

.....

2

..... [2]

- (iii) Suggest **three** impacts of the pollution of Versova Beach on people.

1

.....

2

.....

3

..... [3]

(iv) Explain how pollution of beaches as Versova Beach can affect the natural environment.

.....
.....
.....
.....
.....
.....
.....
.....

[4]

(b) From the list below select the correct term to match each of the descriptions **(i)** to **(v)**.

bush encroachment / sustainability / contour ploughing / desertification / overgrazing / global warming / deforestation

(i) The process by which fertile land becomes a desert, typically as a result of drought, deforestation, or inappropriate agriculture.

.....

(ii) The action of clearing a wide area of trees.

.....

(iii) The invasion and/or thickening of aggressive undesired woody species resulting in an imbalance of the grass – bush ratio, a decrease in biodiversity, a decrease in carrying capacity and consequent economic loss.

.....

(iv) An example of good land management which prevents soil erosion.

.....

(v) Avoidance of the depletion of natural resources in order to maintain an ecological balance.

.....

[5]

[15]

Geomorphology

3 (a) Write a short sentence or phrase to give the meaning of the following concepts.

(i) *Plate*

.....
.....

(ii) *Subduction zone*

.....
.....

(iii) *Volcanism*

.....
.....

(iv) *Earthquake*

.....
.....

(v) *Erosion*

.....
.....

[5]

(b) Study Fig. 2, which shows a volcano.

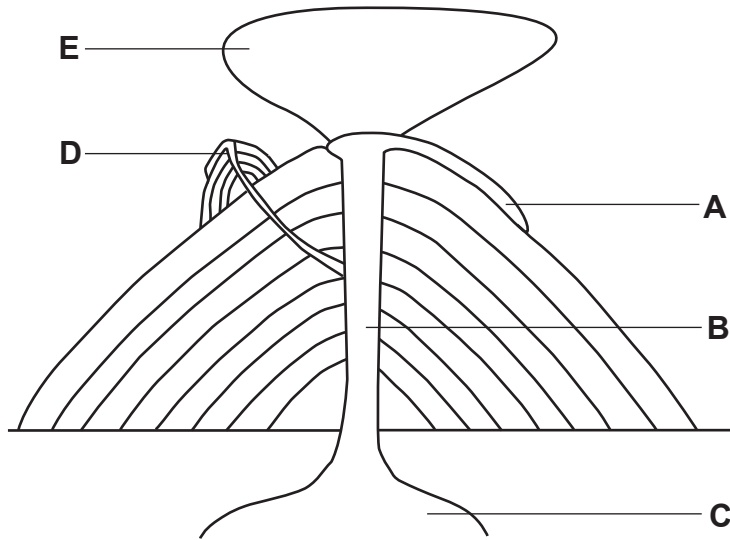


Fig. 2

(i) Identify the parts labelled **A**, **B**, **C**, **D** and **E**.

A.....

B.....

C.....

D.....

E.....

[5]

(ii) Describe **two** effects that volcanic ash and dust have on people.

1.....

.....

2.....

.....

[2]

(iii) Discuss **three** impacts that volcanoes can have on human activities.

1.....

.....

2.....

.....

3.....

.....

[3]

[15]

Population Geography

- 4 (a) State the correct concept for each of the following phrases.
- (i) The number of years a person in a country is expected to live.
.....
 - (ii) Immigration minus (-) emigration.
.....
 - (iii) Number of births in one year per thousand.
.....
 - (iv) The number of babies dying under the age of one year among the live births in a given area.
.....

[4]

- (b) Study Table 1, which shows information about the birth and death rates of Namibia, a Less Economically Developed Country (LEDC) and Italy, a More Economically Developed Country (MEDC) in 2017.

Table 1

Country	Birth rate (per 1 000 of population)	Death rate (per 1 000 of population)
Namibia	27,3	7,9
Italy	7,7	10,4

- (i) What evidence in Table 1 suggests that Italy had a natural population decrease in 2017?
.....
- (ii) Calculate the natural population growth rate of Namibia. Show your working.

[1]

Natural population growth rate = per 1 000

[2]

(iii) Give **three** reasons why there are high death rates in LEDCs such as Namibia.

- 1
- 2
- 3

[3]

(iv) Explain why there are low birth rates in MEDCs such as Italy.

- 1
-
- 2
-
- 3
-

[3]

(c) Study Fig. 3, which shows a population pyramid for Namibia.

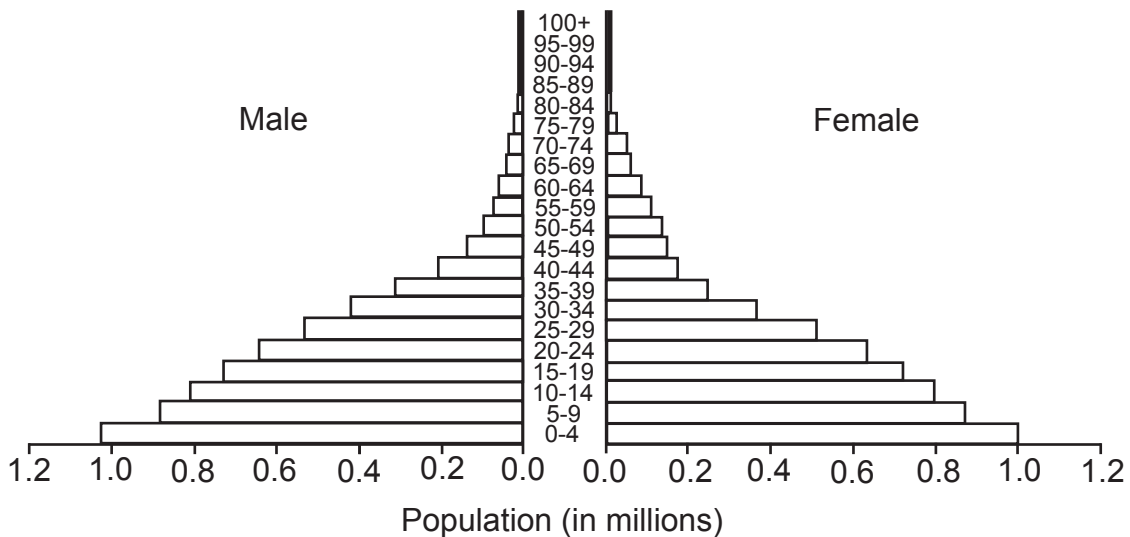


Fig. 3

Suggest **two** ways in which the population pyramid for an MEDC (Italy) is likely to be different from the population pyramid of an LEDC (Namibia).

- 1
-
- 2
-

[2]

[15]

5 (a) Study Fig. 4, which shows cities which are expected to have a population greater than 5 million by 2020.

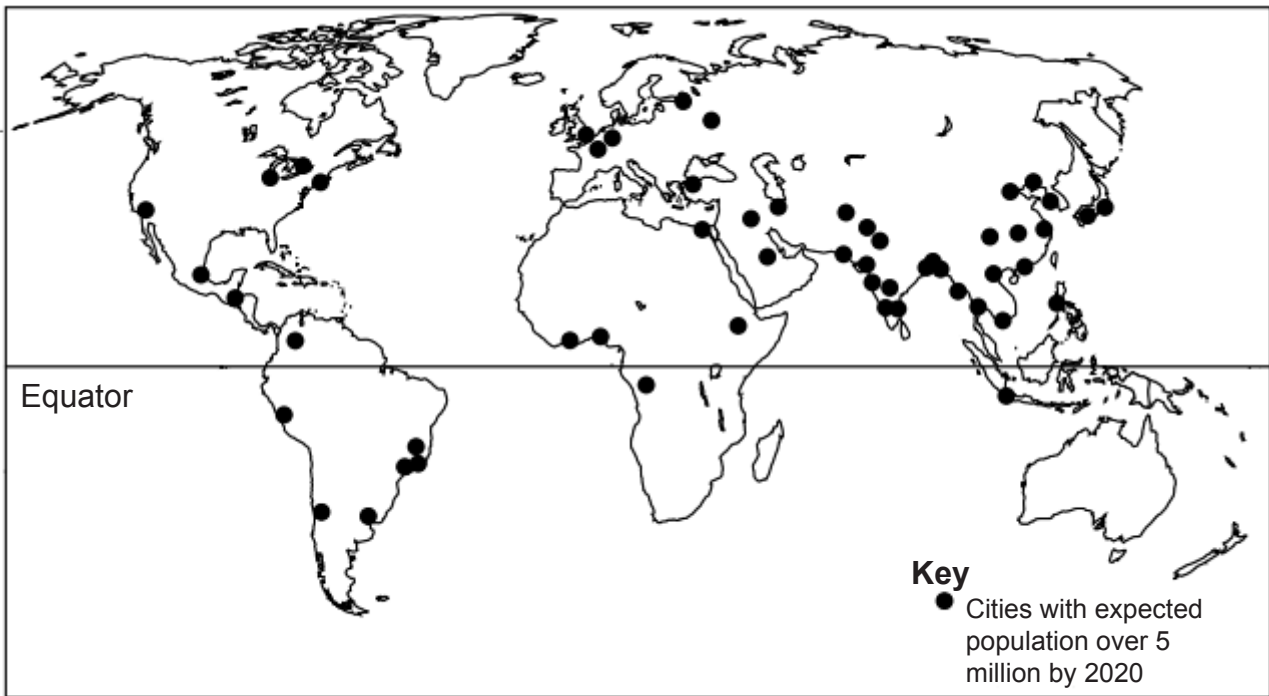


Fig. 4

(i) Name the continent which will have the most cities with a population greater than 5 million by 2020.

..... [1]

(ii) State **two** other features of the distribution of the cities shown in Fig. 4.

1

.....

2

..... [2]

(iii) List **two** of the cities shown on Fig. 4.

1

2

(iv) Discuss **three** reasons for the rapid growth of these large cities.

1.....

.....

2.....

.....

3.....

.....

[3]

(v) Explain **two** problems associated with rapid urban population growth.

1.....

.....

2.....

.....

[2]

[10]

Regional Geography

6 (a) Fig. 5, shows a map of Southern Africa.

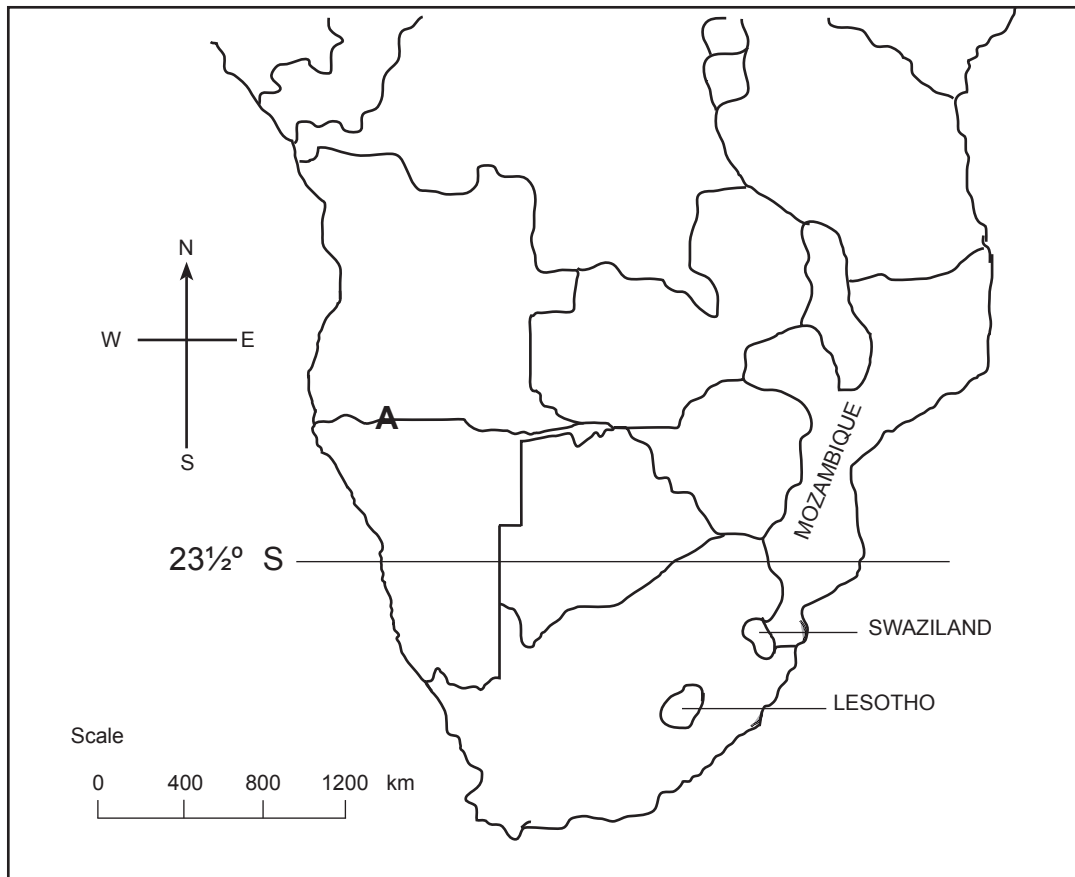
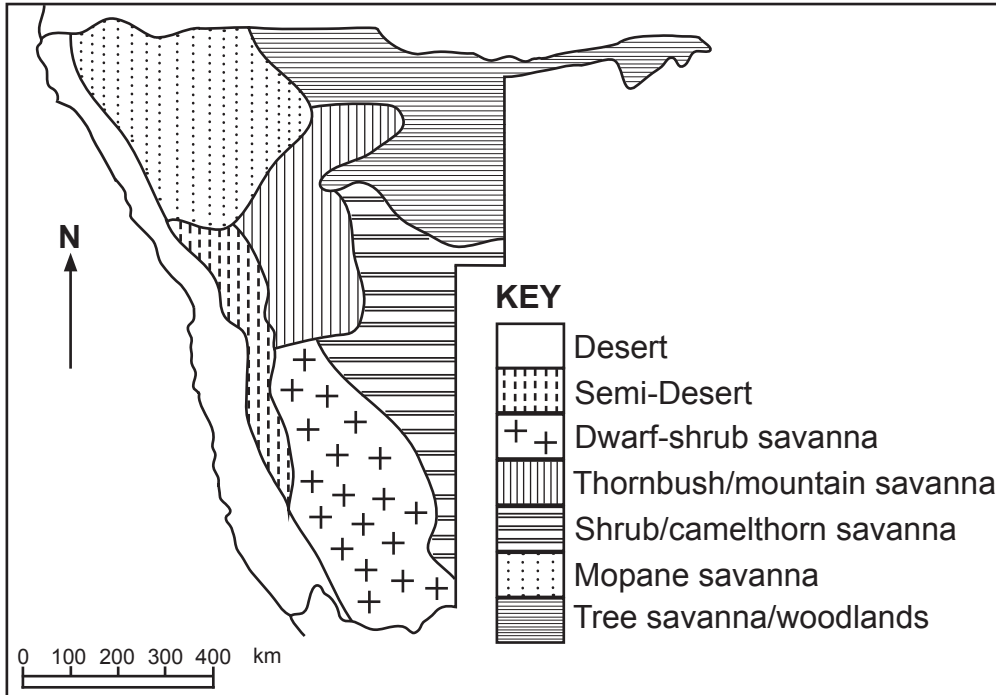


Fig. 5

- (i) Write on the map, Fig. 5 the names of **two** neighbouring countries of Namibia. [2]
- (ii) Identify the latitude line $23\frac{1}{2}^{\circ}$ S, passing through Namibia. [1]
-
- (iii) Write down the name of the river marked **A**. [1]
-

(b) Fig. 6, shows the map of natural vegetation of Namibia and Photographs **A** and **B** show vegetation.



Photograph A



Photograph B



Fig. 6

(i) In which vegetation region on the map do we find the type of vegetation indicated in Photographs **A** and **B**.

Photograph **A**.....

Photograph **B**.....

[2]

(ii) List **four** factors influencing the climate of Namibia.

1

2

3

4

[4]

[10]

7 (a) Choose and write down **one** name of a transport mode you have studied.

Mode of transport.....

(i) Describe **two** advantages of your chosen mode of transport.

1

.....

2

.....

[2]

(ii) Describe **two** disadvantages of your chosen mode of transport.

1

.....

2

.....

[2]

(b) Study Fig. 7, which shows major mines in Namibia.

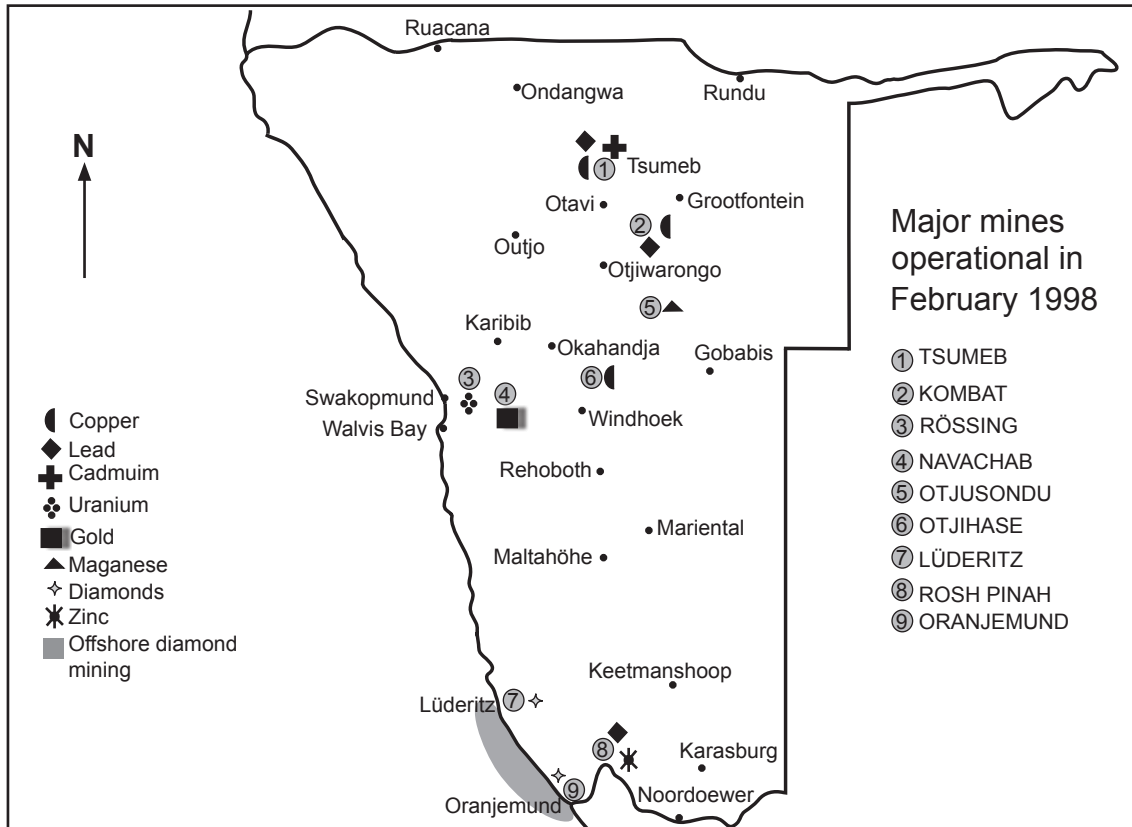


Fig. 7

Choose either diamonds or uranium.

Mineral

(i) Identify from the map where the mineral you have chosen is mined.

..... [1]

(ii) Name **two** problems experienced by mining industries.

1

2 [2]

(iii) Discuss the economic importance of mining in Namibia.

.....

[3]

[10]