

# INSERT A 4342/1

SIZE/TAILLE

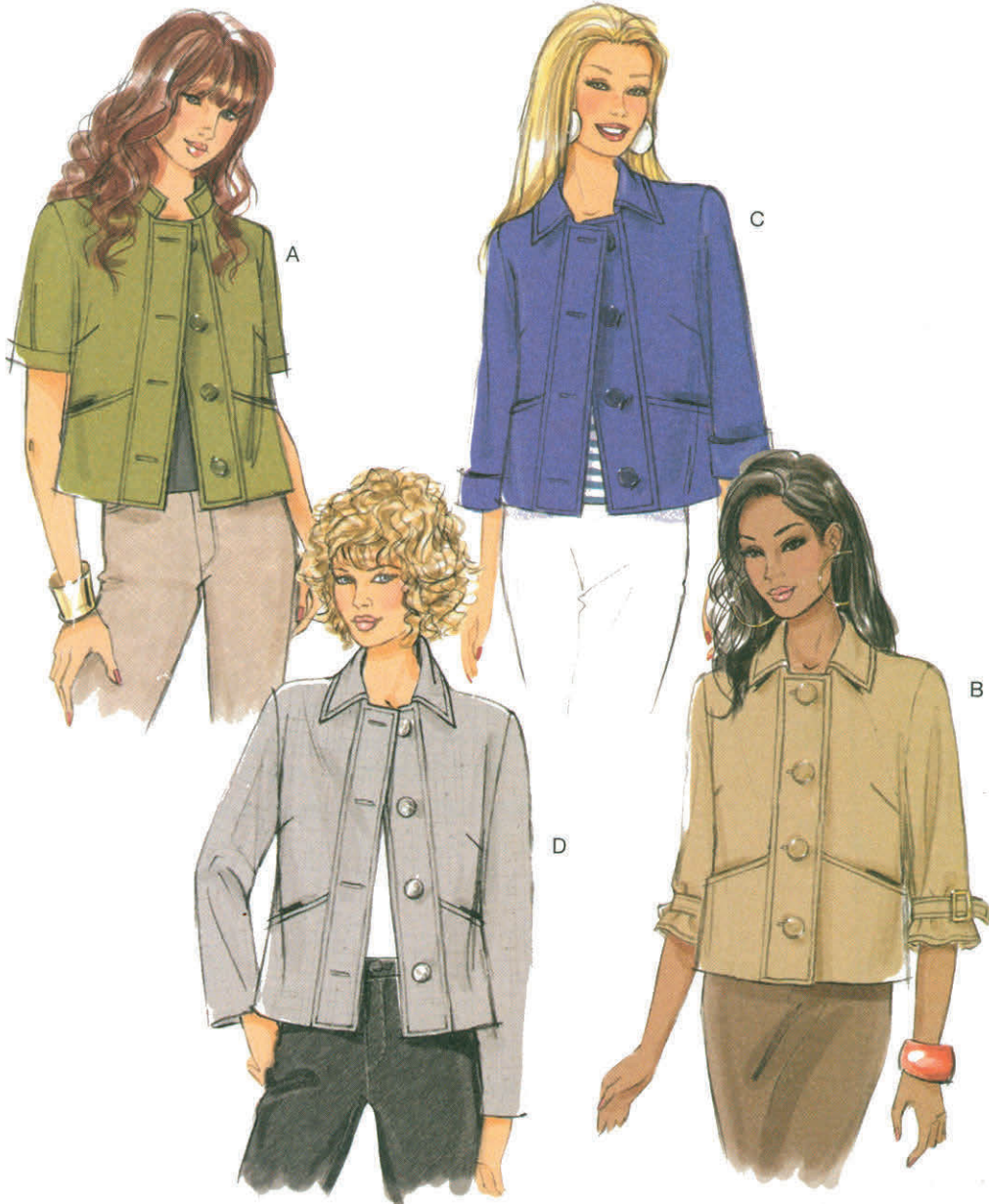
AA

(6-8-10-12)

B5617/AA



# B5617 Butterick



# INSERT B 4342/1

SIZES/TAILLES	6	8	10	12	14	16	18	20
Bust	30½	31½	32½	34	36	38	40	42
Waist	23	24	25	26½	28	30	32	34
Hip	32½	33½	34½	36	38	40	42	44
Poitrine	77	80	83	87	92	97	102	107
Taille	58	61	64	67	71	76	81	87
Hanches	83	85	88	92	97	102	107	112

## Butterick

## B5617

PATTERN/PATRON

U.S. \$18.95 CAN. \$18.95

● YELLOW L

## B5617

**easy**

**facile**

**MISSES' JACKET:** Very loose-fitting, hip length jackets A, B, C, D have front band, darts, front in-seam pockets, princess seamed back, button closure and topstitch trim. A: short sleeves with stitched hem and topstitched stand-up collar. B, C, D: collar band and topstitched collar. B: below elbow sleeves with buckled bands and stitched hem. C: three-quarter length sleeves with turned back cuff. D: long sleeves.

**NOTIONS:** Jacket A, B, C, D: Four 1½" Buttons. Also for B: Two 1¼" Buckles without Prong.

**FABRICS:** Jacket A, B, C, D: Linen, Lightweight Poplin, Lightweight Denim and Lightweight Broadcloth. Unsuitable for obvious diagonals. Allow extra fabric to match plaids or stripes. Use nap yardages/layouts for pile, shaded or one-way design fabrics. \*with nap. \*\*without nap.

**Combinations:** AA(6-8-10-12), EE(14-16-18-20)

**VESTE (J. femme):** Vestes A, B, C, D très amples, longueur aux hanches, avec bande au devant, pinces, poches dans la couture intérieure du devant, couture française au dos, fermeture à bouton et garniture de surpiqué. A: manches courtes, ourlet piqué et col droit surpiqué. B, C, D: pied de col et col surpiqué. B: manches au-dessous du coude à bandes avec des boucles et ourlet piqué. C: manches trois quarts avec poignet retroussé. D: manches longues.

**MERCERIE:** Veste A, B, C, D: 4 Boutons (28mm). Plus pour B: 2 Boucles sans pointe (32mm).

**TISSUS:** Veste A, B, C, D: Toile de lin, Popeline fine, Denim fin et Toile ultra-fine. Grandes diagonales ne conviennent pas. Compte non tenu des raccords de rayures/carreaux. \*avec sens. \*\*sans sens.

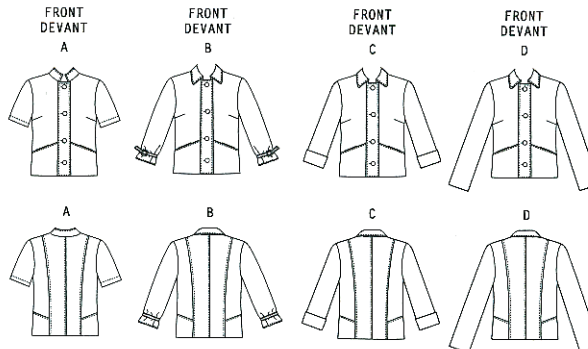
**Séries:** AA(6-8-10-12), EE(14-16-18-20)

**MULTI-SIZED FOR CUSTOM FIT**

**MULTI-TAILLES/A VOS MESURES**

SIZES	6	8	10	12	14	16	18	20
<b>JACKET A</b>								
45**/**	1¾	1¾	1¾	1¾	1¾	2¼	2¼	2¼
60**/**	1¼	1¼	1½	1½	1½	1½	1½	1½
<b>FUSIBLE INTERFACING A</b>								
18", 20", ¾ yd.								
<b>JACKET B</b>								
45**/**	2½	2½	2½	2½	2½	2½	2½	2½
60**/**	1½	1½	1½	1½	1½	1½	1½	1½
<b>FUSIBLE INTERFACING B</b>								
18", 20", 1¼ yds.								
<b>JACKET C, D</b>								
45**/**	2	2½	2½	2½	2½	2½	2½	2½
60**/**	1½	1½	1¾	1¾	1¾	1¾	1¾	1¾
<b>FUSIBLE INTERFACING C, D</b>								
18", 20", 1½ yds.								
<b>Width, lower edge</b>								
Jacket A, B, C, D 37½ 38½ 39½ 41 43 45 47 49								
<b>Back length from base of your neck</b>								
Jacket A, B, C, D 21¼ 21½ 21¾ 22 22¼ 22½ 22¾ 23								

TAILLES	6	8	10	12	14	16	18	20
<b>VESTE A</b>								
115cm**/**	1.60	1.60	1.60	1.60	1.60	2.10	2.10	2.10
150cm**/**	1.20	1.20	1.40	1.40	1.40	1.40	1.40	1.40
<b>ENTOILAGE THERMOCOLLANT A</b>								
46, 51cm, 0.70m								
<b>VESTE B</b>								
115cm**/**	2.10	2.10	2.10	2.10	2.10	2.30	2.30	2.40
150cm**/**	1.50	1.50	1.50	1.50	1.50	1.80	1.80	1.80
<b>ENTOILAGE THERMOCOLLANT B</b>								
46, 51cm, 1.20m								
<b>VESTE C, D</b>								
115cm**/**	1.90	2.00	2.00	2.00	2.00	2.40	2.40	2.40
150cm**/**	1.40	1.40	1.60	1.60	1.60	1.80	1.80	1.80
<b>ENTOILAGE THERMOCOLLANT C, D</b>								
46, 51cm, 1.10m								
<b>Largeur, à l'ourlet</b>								
Veste A, B, C, D 95 98 100 104 109 115 120 125								
<b>Longueur - dos, votre nuque à l'ourlet</b>								
Veste A, B, C, D 54 55 55 56 57 57 58 59								



BUTTERICK PATTERN, 120 BROADWAY, NEW YORK 10271 © 2011 The McCall Pattern Co. ● www.butterick.com  
● PRINTED IN U.S.A. ALL RIGHTS RESERVED. SOLD FOR INDIVIDUAL HOME USE ONLY AND NOT FOR COMMERCIAL OR MANUFACTURING PURPOSES./RESERVE A UN USAGE PERSONNEL