

JUNIOR SECONDARY CERTIFICATE

OSHIKWANYAMA FIRST LANGUAGE

1104/2

PAPER 2 Continuous Writing

2 hours

Marks 30

2019

Additional Materials: Answer Book

INSTRUCTIONS AND INFORMATION TO CANDIDATES

- Write your answers in the Answer Book provided.
- Write your Candidate Number and Name in the spaces on the Answer Book.
- Write in dark blue or black pen.
- Do not use correction fluid.

- Answer **one** question from Section **A** and **one** question from Section **B**.
- All topics in each section of this paper carry equal marks.

- Pay attention to spelling, punctuation and sentence structure.

OMALOMBWELO NOMAUYELELE KOVAHONGWA

- Nyola omanyamukulo oye mEmbo lOmanyamukulo olo wa pewa.
- Nyola Onomola yEkonakono nEdina loye kEmbo loye lOmanyamukulo.
- Nyola nopena imbulau ile ilaula.
- Ino longifa okadimifo komeva.

- Nyamukula epulo **limwe** okudja moshitukulwa sha-**A** **nalimwe** okudja moshitukulwa sha-**B**.
- Oipalanyole aishe i li moshitukulwa keshe shombapila yomapulo ei, oi na oitwa i fike pamwe.

- Kotokela esipelo loitya, elongifonawa loileshifo netungo lomatumbulo.

This document consists of **3** printed pages.



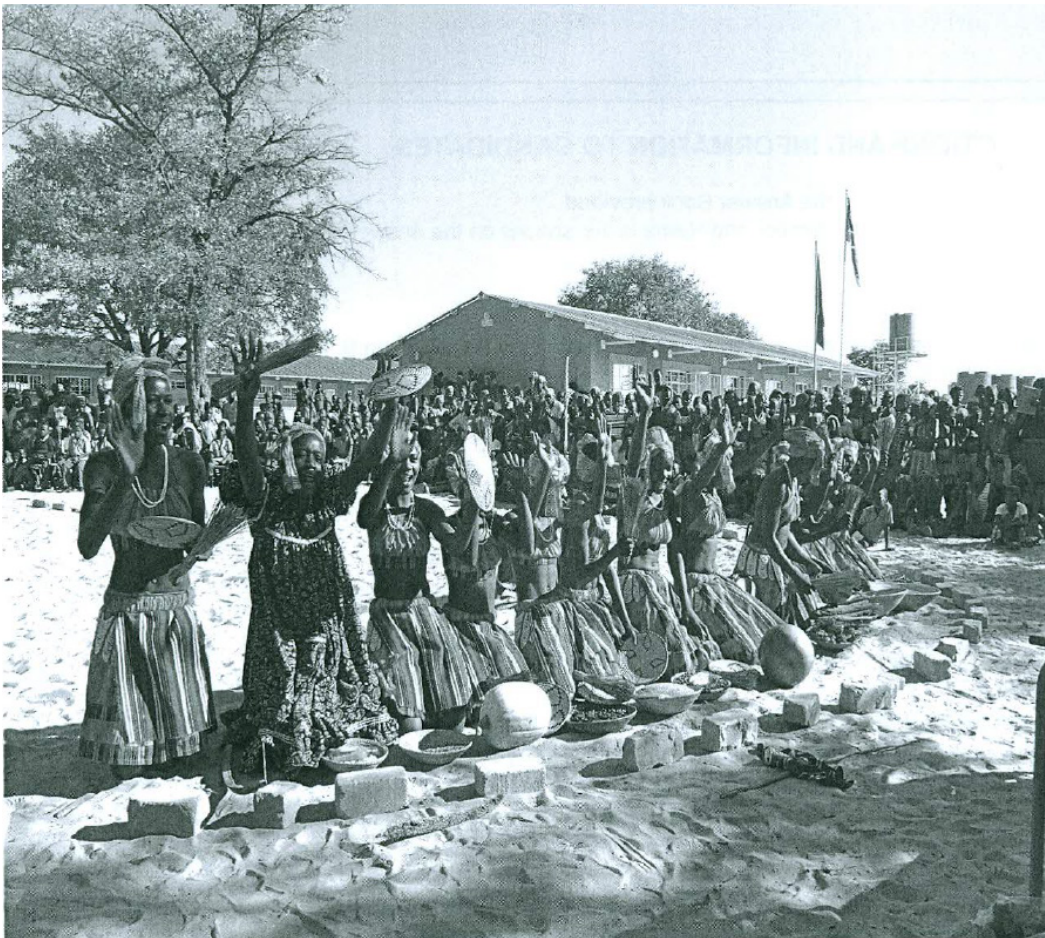
Republic of Namibia

MINISTRY OF EDUCATION, ARTS AND CULTURE

OSHITUKULWA 1

Lesha nawa oipalanyole tai shikula apa, hoolola po **shimwe**, ndele to shi totele etotwahepu. Etotwahepu loye nali kale noule woitya **300 – 350**.

- 1 Omalihumbato ovanyasha mefimbo lopaife otaa limbililike. Oto shi popile?
- 2 Oudano wekopi loshikundaneki shoThe Namibian owa endele nawa neudo.
- 3 Ongodi yopeke otai kwafele/itai kwafele melihongo lomunafikola.
- 4 Oshike shi na okuningwa po, opo pu kwatelwe po omeva moshilongo shetu?
- 5 Osho handi ka ninga konima yelihongo lange londodo onhimulongo.
- 6 Konakona nawa efano eli, li kongela oshipalanyole ndee to li totele etotwahepu liwa.



[20]

OSHITUKULWA 2

Lesha nawa oipalanyole tai shikula, hoolola po **shimwe** ashike. Oule woshinyolwa shoye nau kale pokati koitya **150 – 200**.

- 1 Ove ou li omutoolinghundana woshifo sho “Namibian Sun”. Owa li wa lotokela koshikunino shoihape kEtunda koshitukulwa shaMusati, oko taku popiwa ku na okapuka taka hanauna po omapungu noikunwa ikwao yovanaafalama.
Shanga **olopota** yomoshifokundaneki sheni kombinga yaashishe osho wa mona ko.
- 2 Ofikola yeni oya li ye shi endifa nawa moidjemo yondodo 10 yomudo 2018 noya li ya shivwa i ye keyandjo lomapapa mOshikandjohongo sheni. Ove owa li wa tumwa u ka kalele po ofikola yeni keyandjo lomapapa eli, shaashi oove wa li omulihongi dingi pofikola. Owa li wa pulwa, opo u ka yandje oshipopiwa, u twe ovanafikola vakweni omukumo ve lihonge nouidiinini.
Longekida nee **oshipopiwa** shoye.
- 3 Ou na kahewa/kaume koye, te lihongo kondje yoshilongo ko-Ukraine, oko a ninga ko eedula mbali paife ina enda mo moshilongo. Mu nyolela ombilive u mu hokololele nghee oshikukuta sha denga oshilongo ashishe, nomakwafo oo mwa pewa opo onghalo inawapalekwe.
- 4 Owa shakaneka kaume/kahewa koye wopomudingonoko weni oo wa kala wa efa nale, nokwa li a hala e ku hongolole u efe po ofikola, ove u landule eengeda daye shaashi vati keshe efiku oku na ofilinga mondjato noha dulu okulanda keshe eshi ye a hala efimbo keshe. Indeni nee meenghundafana naye ove u mu pe omaliudo oye kombinga yoshinima osho.
Omupopi keshe na popye oikando **ine** inamu kwatelwa omapopifafano.

[10]