



ÆQUAM SERVARE MENTEM

SASTRI COLLEGE  
SEPTEMBER CONTROLLED TEST 2018  
DEPARTMENT OF SOCIAL SCIENCES  
SOCIAL SCIENCES: GRADE 9  
TERM 3



ÆQUAM SERVARE MENTEM

EXAMINER: MS K. SINGH

MODERATOR: MRS G.T. MOODLEY

TIME: 1 HOUR

MARKS: 60

**INSTRUCTIONS:**

1. This question paper consists of FOUR PAGES.
2. There are FIVE QUESTIONS in this paper. Answer ALL questions completely.
3. Rule off after each question.
4. Write neatly and legibly.

**QUESTION ONE:**

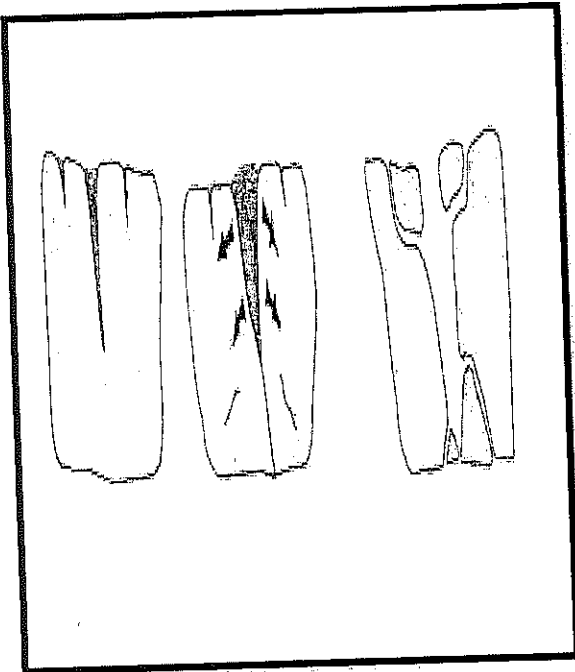
MATCH THE TERMS IN COLUMN A WITH THE APPROPRIATE STATEMENTS IN COLUMN B.

COLUMN A	COLUMN B
1.1. Weathering	A. A small piece broken off something.
1.2. Particle	B. An area where a river becomes shallower and has some rocks exposed above the flow surface.
1.3. Fragment	C. To rot or break down.
1.4. Fracturing	D. Decaying plant and animal remains.
1.5. Decompose	E. Breaking down of rock and minerals on the Earth's surface.
1.6. Sediment	F. The blunt edge of a spur that has been eroded by a glacier.
1.7. Rapid	G. The movement of material, such as sand along a coast by wave action.
1.8. Longshore Drift	H. Breaking, splitting or cracking something.
1.9. Truncated Spur	I. Material from fine mud to large rocks that has been deposited by agents of erosion.
1.10. Humus	J. A very small piece of something.

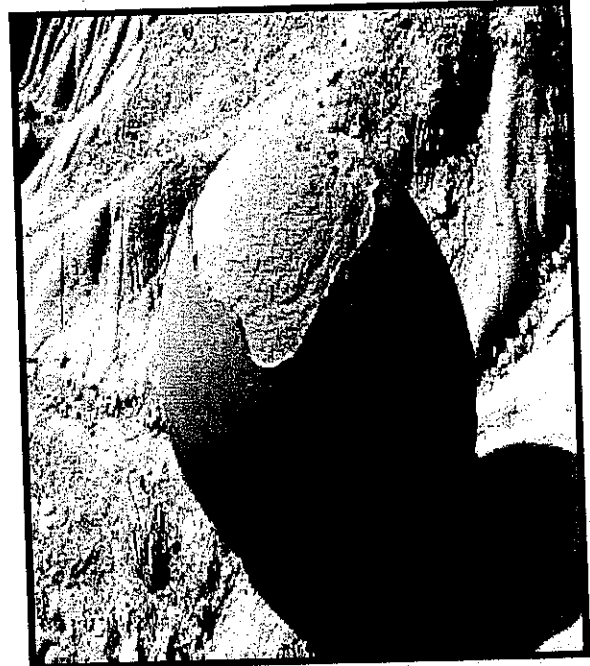
[10]

**QUESTION TWO:**

**STUDY THE DIAGRAMS BELOW AND ANSWER THE QUESTIONS SET.**



**DIAGRAM A**



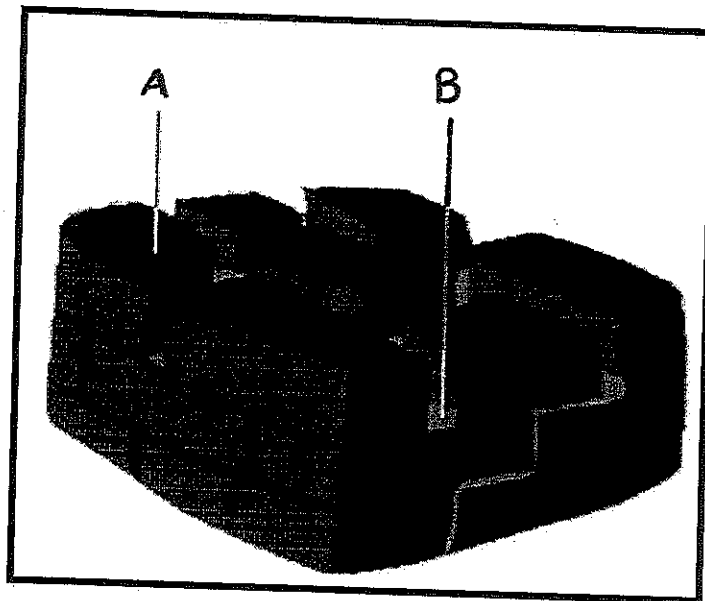
**DIAGRAM B**

- 2.1. Define the term **PHYSICAL WEATHERING**. (1x2)(2)
- 2.2. State the type of physical weathering as depicted in diagrams **A** and **B** respectively. (2x1)(2)
- 2.3. Give an alternative name for the process described in **Diagram A**. (1x1)(1)
- 2.4. Explain the formation of **Diagram A**. (4x1)(4)
- 2.5. Give **ONE** word that describes the repeated heating and cooling which causes the rock to peel off. (1x1)(1)

**[10]**

**QUESTION THREE:**

STUDY THE DIAGRAM BELOW AND ANSWER THE QUESTIONS SET.



3.1. Provide labels for A and B.

(2x1)(2)

3.2. Labels A and B are caused due to chemical weathering.

Explain how these features on a limestone pavement are formed by the process of chemical weathering.

(3x1)(3)

3.3. Where is this type of weathering likely to occur?

(1x1)(1)

3.4. Give **ONE** example of chemical weathering on limestone other than the one depicted in the diagram above.

(1x1)(1)

3.5. As humans we are great contributors to weathering. In a paragraph state how we as humans contribute to chemical weathering.

(3x1)(3)

[10]

**QUESTION FOUR:**

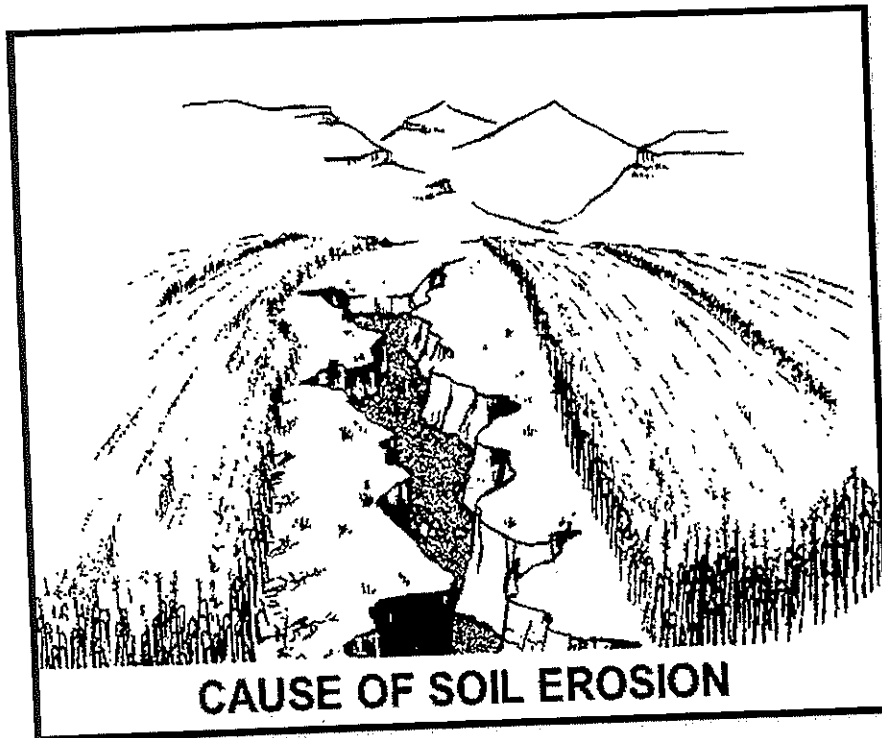
DRAW AND EXPLAIN THE FORMATION OF AN OX-BOW LAKE.

\*REMEMBER IT IS FORMED FROM A MEANDER\*

[10]

**QUESTION FIVE:**

Below is a diagram of how soil erosion destroys our beautiful land.



5.1. Define the term **SOIL EROSION**.

(1x2)(2)

5.2. List **THREE** human activities that cause soil erosion.

(3x1)(3)

5.3. Explain how the following poor farming methods contribute to soil erosion:

(1x1)(1)

5.3.1. Overgrazing

(1x1)(1)

5.3.2. Monoculture

(1x1)(1)

5.3.3. Overstocking

(2x2)(4)

5.4. Predict what will happen if fertile soil was eroded in your community.

(3x1)(3)

5.4. List **THREE** preventative measures to soil erosion.

(5x1)(5)

5.5. Draw and label the effects of a raindrop on the soil.

[20]

---

**TOTAL 60**