

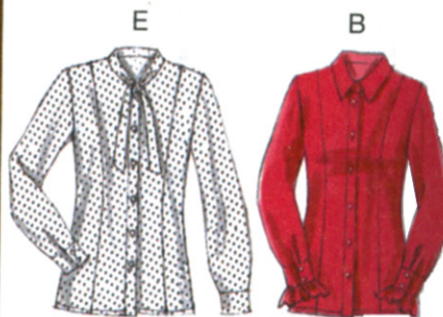
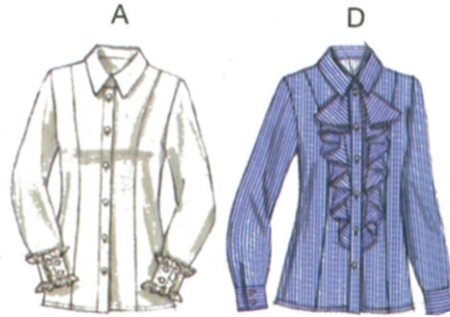
INSERT A 4342/1

V9029 (8-10-12-14-16)
SIZE/TAILLE V9029/B5

B5



VOGUE® EASY OPTIONS



INSERT B 4342/1

V9029	SIZES/TAILLES	8	10	12	14	16	18	20	22	24
	Bust	31½	32½	34	36	38	40	42	44	46
	Waist	24	25	26½	28	30	32	34	37	39
	Hip	33½	34½	36	38	40	42	44	46	48
	Poitrine	80	83	87	92	97	102	107	112	117
	Taille	61	64	67	71	76	81	87	94	99
	Hanches	85	88	92	97	102	107	112	117	122

VOGUE PATTERNS

U.S. \$25.00 CAN. \$33.00 ● GREEN T

V9029 EASY/FACILE

MISSES' BLOUSE: Fitted blouse has princess seams, front button bands, sleeves with continuous lap, pleats, button cuffs, and French seams. Narrow hem. Sleeve ruffles **A, B** and flounces **D**: Very narrow hem, wrong side shows. **A, B, C, D**: Collar and collar band. **E, F**: Bias collar extends into tie ends.

CHEMISIER (J. femme): Chemisier ajusté, à coutures princesse, bandes devant boutonnées, manches à sous-patte, plis, poignets boutonnés et coutures anglaises. Ourlet étroit. Volants de manche **A, B** et volants **D**: Ourlet très étroit, l'envers visible. **A, B, C, D**: Col et pied de col. **E, F**: Col en biais formant les attaches.

Combinations: **B5**(8-10-12-14-16), **F5**(16-18-20-22-24)
FABRICS: Crepe de Chine, Challis, Georgette, Charmeuse.
 Unsuitable for obvious diagonals.
 *With Nap. **Without Nap.

Séries: **B5**(8-10-12-14-16), **F5**(16-18-20-22-24)
TISSUS: Crêpe de Chine, Etamine, Crêpe georgette, Charmeuse.
 Grandes diagonales ne conviennent pas.
 *Avec Sens. **Sans Sens.

SIZES	8	10	12	14	16	18	20	22	24
A 45"/**	2¾	2¾	2¾	2¾	2¾	2¾	2¾	2¾	2¾
60"/**	1½	1½	1½	1¾	1¾	2	2½	2½	2½
B 45"/**	2¼	2¼	2¼	2¼	2¾	2¾	2¾	2¾	2¾
60"/**	1½	1½	1½	1½	2	2	2	2	2
C 45"/**	2¼	2¼	2¼	2¼	2¼	2¼	2½	2½	2½
60"/**	1½	1½	1½	1¾	1¾	1¾	1¾	2	2
D 45"/**	2¾	2¾	2¾	2¾	2¾	2¾	2¾	2¾	2¾
60"/**	1¾	1¾	1¾	1¾	2	2½	2½	2½	2½

TAILLES	8	10	12	14	16	18	20	22	24
A 115cm/**	2.2	2.2	2.2	2.2	2.2	2.2	2.6	2.7	2.7
150cm/**	1.5	1.5	1.5	1.6	1.8	1.9	2.0	2.0	2.0
B 115cm/**	2.1	2.1	2.1	2.1	2.2	2.2	2.6	2.6	2.6
150cm/**	1.5	1.5	1.5	1.5	1.9	1.9	1.9	1.9	1.9
C 115cm/**	2.0	2.0	2.1	2.1	2.1	2.1	2.4	2.4	2.4
150cm/**	1.4	1.4	1.4	1.6	1.6	1.8	1.8	1.9	1.9
D 115cm/**	2.2	2.3	2.4	2.4	2.4	2.4	2.7	2.7	2.7
150cm/**	1.8	1.8	1.8	1.8	1.9	2.0	2.0	2.0	2.0

FUSIBLE INTERFACING A, B, C, D - 18", 20" - 1 yd.
E 45"/** 2¼ 2¼ 2¼ 2¾ 3 3 3 3¾ 3¾
60"/** 2½ 2½ 2¼ 2¼ 2¼ 2¾ 2¾ 2¾ 2¾
F 45"/** 3 3 ¾ ¾ ¾ ¾ ¾ ¾ ¾ ¾
60"/** 2¾ 2¾ 2¾ 2¾ 2¾ 2¾ 2¾ 3 3
FUSIBLE INTERFACING E, F - 18", 20" - ¾ yd.
NOTIONS: A, B, C, D, E, F: Ten ½" Buttons. **A, B, C, D:** One ½" Snap.
FINISHED GARMENT MEASUREMENTS
Width, lower edge
A thru F 36¾ 37¾ 39¼ 41¼ 43¼ 45¼ 47¼ 49¼ 51¼
Back length from base of neck
A thru F 24¾ 25 25¼ 25½ 25¾ 26 26¼ 26½ 26¾

ENTOILAGE THERMOCOLLANT A, B, C, D - 46, 51cm - 1.0m
E 115cm/** 2.1 2.1 2.1 2.7 2.8 2.8 2.8 2.9 2.9
150cm/** 2.0 2.0 2.1 2.1 2.1 2.2 2.2 2.2 2.2
F 115cm/** 2.8 2.8 3.0 3.0 3.0 3.1 3.2 3.2 3.2
150cm/** 2.6 2.6 2.6 2.6 2.7 2.7 2.7 2.8 2.8
ENTOILAGE THERMOCOLLANT E, F - 46, 51cm - 0.7m
MERCERIE: A, B, C, D, E, F: 10 Boutons de 13mm. **A, B, C, D:** 1 Bouton-pression de 13mm.
MESURES DU VÊTEMENT FINI
Largeur à l'ourlet
A à F 94 96 100 105 110 115 120 125 130
Longueur - dos, votre nuque à l'ourlet
A à F 63 64 64 65 66 66 67 67 68

