



Cambridge O Level

CANDIDATE
NAME

--

CENTRE
NUMBER

--	--	--	--	--

CANDIDATE
NUMBER

--	--	--	--



FASHION & TEXTILES

6130/01

Paper 1 Theory

May/June 2023

2 hours

You must answer on the question paper.

You will need: Ruler
Small piece of fabric, needle and thread

INSTRUCTIONS

- Answer **four** questions in total:
 - Section A: answer **all** parts of Question 1.
 - Section B: answer **three** questions.
- Use a black or dark blue pen.
- Write your name, centre number and candidate number in the boxes at the top of the page.
- Write your answer to each question in the space provided.
- Do **not** use an erasable pen or correction fluid.
- Do **not** write on any bar codes.
- You may use an HB pencil for any diagrams or rough working.
- You should illustrate your answers with clear, bold diagrams wherever necessary.
- You may use a needle and thread and a small piece of fabric to help in making drawings of stitches.
- This fabric should **not** be handed in with your work.

INFORMATION

- The total mark for this paper is 100.
- The number of marks for each question or part question is shown in brackets [].

This document has **24** pages. Any blank pages are indicated.

Section A

Answer **all** parts of Question 1.

1 Fig. 1.1 is a drawing of a child's dress.

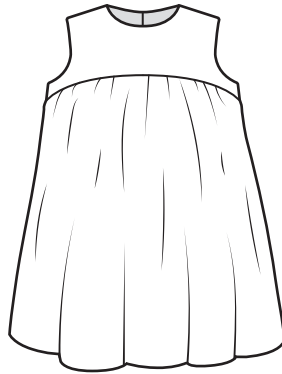


Fig. 1.1

(a) (i) The child's dress in Fig. 1.1 is made from lawn fabric. Describe lawn fabric.

Appearance

Feel/handle

[2]

(ii) Describe the construction method used to make lawn fabric.

.....
.....
.....
.....
.....
.....
..... [3]

(iii) Suggest **one** natural fibre to make the lawn fabric for the child's dress in Fig. 1.1.

..... [1]

(iv) State **four** reasons for your choice of fibre in **1(a)(iii)** for the child's dress in Fig. 1.1.

.....
.....
.....
.....
.....
.....
.....
..... [4]

(b) The child's dress in Fig. 1.1 has a back opening. Suggest **two** fastenings that could be used on the back opening of the dress. Give **one** reason for each choice of fastening.

Fastening 1
Reason
Fastening 2
Reason [4]

(c) (i) Suggest **two** sleeve styles that could be added to the child's dress in Fig. 1.1.

.....
..... [2]

(ii) Identify **one** different method of controlling fullness in the skirt of the child's dress in Fig. 1.1.

..... [1]

(iii) State the correct order of work to make a machine stitched double hem on the child's dress in Fig. 1.1.

.....

.....

.....

.....

.....

.....

.....

.....

.....

.....

..... [5]

- (iv) Sketch and label an original and appropriate design for a patch pocket to go on the front of the child's dress in Fig. 1.1. Include information about techniques or stitches used.

[4]

- (d) (i) Explain how reflective textiles work.

.....

.....

.....

..... [2]

- (ii) Identify **two** uses for reflective textiles in clothing.

.....

..... [2]

(e) Suggest **four** ways to recycle or repair clothes that are threadbare or have holes in them.

.....

.....

.....

.....

.....

.....





.....

.....

.....

..... [4]

(f) Identify each piece of textile equipment shown in the table below.

Textile equipment	Name
	
	
	
	

[4]

(g) State the sewing machine stitch settings for zig zag stitch.

Stitch setting one:

Stitch setting two:

[2]

[Total: 40]

Section B

Answer any **three** questions from this section.

2 (a) (i) State the origin of wool fibre.

..... [1]

(ii) Explain how wool fibre is made into yarn.

.....
.....
.....
.....
.....
.....
.....
.....
.....
.....
.....
..... [4]

(iii) Identify **one** non-woven fabric made from wool fibre.

..... [1]

(b) Suggest **two** fabric finishes to improve the performance characteristics of fabrics made from wool.

.....
..... [2]

(c) Discuss the performance characteristics of wool fibres. Give examples to support your answer.

.....

.....

.....

.....

.....

.....

.....

.....

.....

.....

.....

.....

.....

.....

.....

.....

.....

.....

.....

.....

..... [6]

(d) Assess the advantages of blending synthetic fibres with wool fibres to make socks.

.....
.....
.....
.....
.....
.....
.....
.....
.....
.....
.....
.....
.....
.....
.....
.....
.....
.....
.....
.....

..... [6]
[Total: 20]

3 Fig. 3.1 is a drawing of a dress.

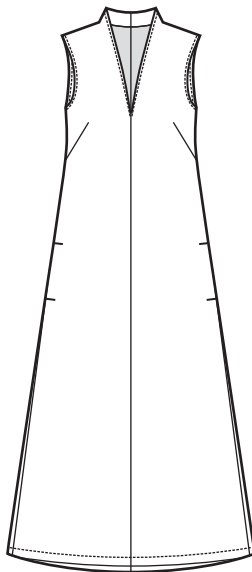


Fig. 3.1

(a) (i) Explain how to construct and attach the neck facing to the dress in Fig. 3.1.

.....

.....

.....

.....

.....

.....

.....

.....

.....

.....

.....

.....

.....

.....

.....

..... [6]

(ii) Suggest **two** alternative ways to neaten the neck edge of the dress in Fig. 3.1.

.....

..... [2]

(b) Assess the factors to consider when purchasing a sewing machine for home use.

.....

.....

.....

.....

.....

.....

.....

.....

.....

.....

.....

.....

.....

.....

.....

.....

.....

.....

.....

.....

.....

.....

..... [6]

(c) Discuss the factors to consider when planning a care label for a textile item.

.....

.....

.....

.....

.....

.....

.....

.....

.....

.....

.....

.....

.....

.....

.....

.....

.....

.....

.....

.....

.....

.....

..... [6]

[Total: 20]

4 (a) (i) Identify **three** methods used to make tie dye patterns on fabric.

.....
.....
.....
.....
.....
..... [3]

(ii) Explain how to dye fabric using **one** of the tie dye methods in 4(a)(i).

.....
.....
.....
.....
.....
.....
.....
.....
.....
..... [5]

(b) Discuss the factors to consider in the selection of fabric for a T shirt.

.....

.....

.....

.....

.....

.....

.....

.....

.....

.....

.....

.....

.....

.....

.....

.....

.....

.....

.....

.....

.....

.....

..... [6]

- 5 (a) Explain how to shorten the paper pattern for a long shirt sleeve. You may use diagrams to support your answer.

.....

.....

.....

.....

.....

.....

.....

.....

.....

[4]

- (b) Identify **four** essential pieces of information found on a commercial paper pattern envelope.

.....

.....

.....

..... [4]

6 (a) (i) Identify **two** fibres that are sustainable.

.....
..... [2]

(ii) Identify **four** benefits to the environment of using sustainable fibres to make fabric for clothes.

.....
.....
.....
.....
.....
.....
.....
.....
.....
.....
.....
.....
.....
.....
.....
.....
.....
..... [4]

(iii) Suggest **two** ways in which textile dyes can harm the environment.

.....
..... [2]

Fig. 6.1 shows village huts in Zimbabwe decorated with traditional patterns.



Fig. 6.1

(b) Discuss ways in which the patterns on the huts in Fig 6.1 can be developed to make a design for an embellishment for a fashion accessory.

.....

.....

.....

.....

.....

.....

.....

.....

.....

.....

.....

.....

.....

.....

.....

.....

.....

.....

.....

.....

.....

..... [6]

BLANK PAGE

Permission to reproduce items where third-party owned material protected by copyright is included has been sought and cleared where possible. Every reasonable effort has been made by the publisher (UCLES) to trace copyright holders, but if any items requiring clearance have unwittingly been included, the publisher will be pleased to make amends at the earliest possible opportunity.

To avoid the issue of disclosure of answer-related information to candidates, all copyright acknowledgements are reproduced online in the Cambridge Assessment International Education Copyright Acknowledgements Booklet. This is produced for each series of examinations and is freely available to download at www.cambridgeinternational.org after the live examination series.

Cambridge Assessment International Education is part of Cambridge Assessment. Cambridge Assessment is the brand name of the University of Cambridge Local Examinations Syndicate (UCLES), which is a department of the University of Cambridge.